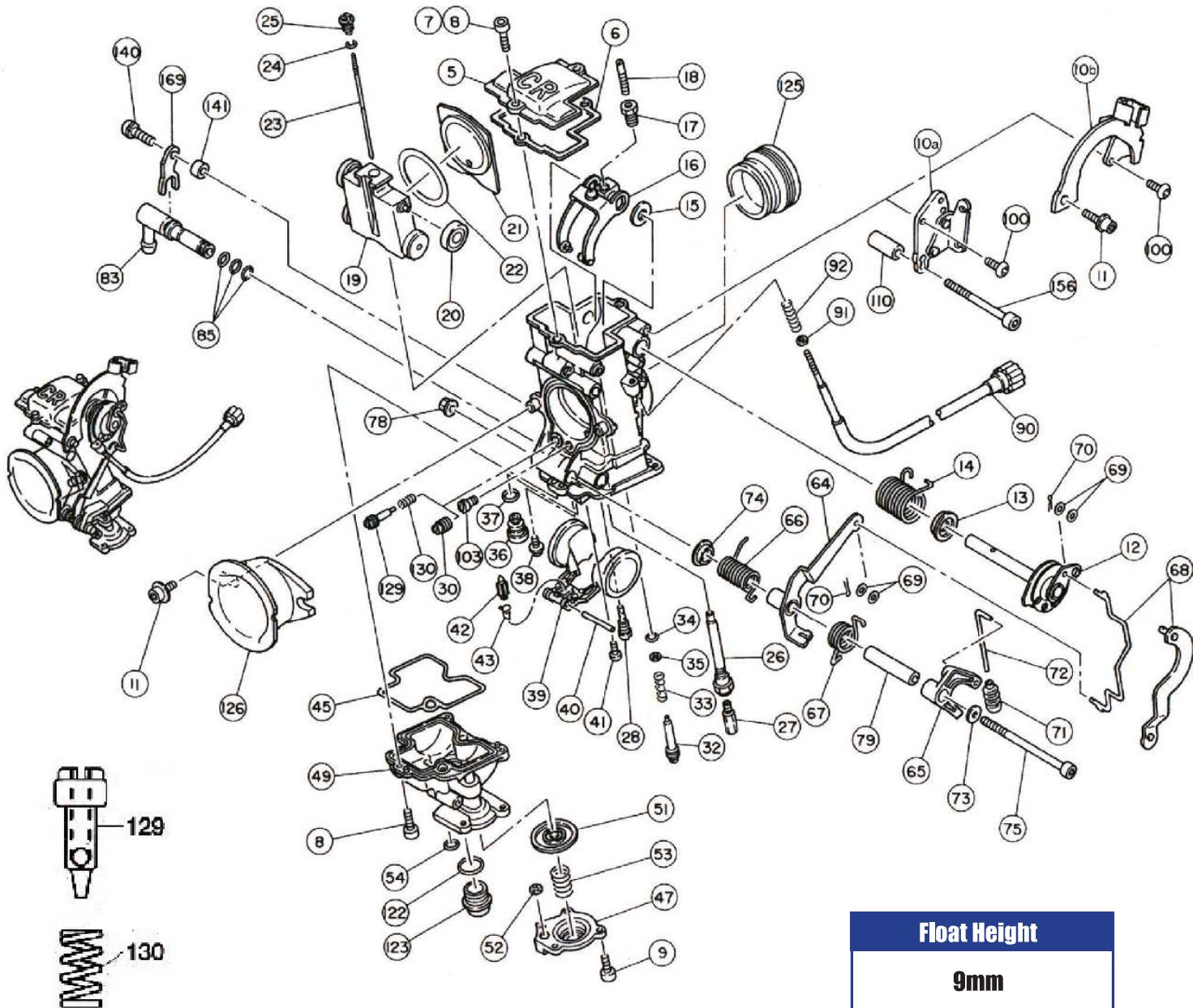


# KEIHIN FCR Single Exploded View



**Float Height**  
**9mm**

## FCR Single Replacement Parts

**Applications:** Downdraft and Horizontal Single Carburetors.  
FCR28, FCR32, FCR33, FCR35, FCR37, FCR39, FCR41.

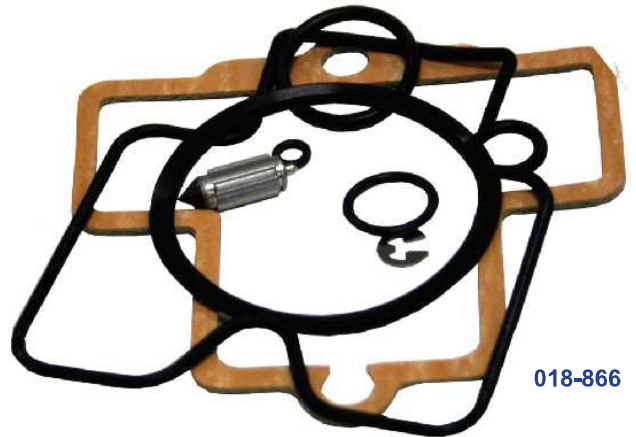
No.	Description	Application	Keihin No.	Order No.
5.	Top Cover	28-33mm 35-41mm	1030-850-2000 1030-855-2000	<b>021-002</b> <b>021-003</b>
6.	Gasket, Top Cover	28-33mm 35-39mm 41mm	1031-805-2000 1031-806-2000 1031-807-2000	<b>021-005</b> <b>021-006</b> <b>021-007</b>
7.	Screw M4 x 12	All	0136-806-1100	<b>021-700</b>
8.	Screw M4 x 10 x 0.7	All	0136-807-1100	<b>021-008</b>
9.	Screw M4 x 8	All	0136-808-1100	<b>021-010</b>
10.	Cable Mount Brackets	<b>See Page 112 for photos and apps.</b>		
10A.	Cable Mount Bracket	All	1190-A33-2300	<b>021-549</b>
10B.	Cable Mount Bracket	All	1190-981-2100	<b>021-129</b>
11.	Screw, Bracket	All	0136-803-1100	<b>021-012</b>
12.	Throttle Shaft	All	5025-960-2101	<b>021-701</b>
13.	Collar	All	1118-958-7000	<b>021-014</b>
14.	Coil Spring	All	1305-942-2000	<b>021-253</b>
15.	Washer	All	0301-092-7000	<b>021-018</b>
16.	Link Arm	28-33mm 35-41mm	1061-815-2100 1061-816-2100	<b>021-020</b> <b>021-021</b>
17.	Hexagon Nut	All	0208-811-1100	<b>021-023</b>

No.	Description	Application	Keihin No.	Order No.
18.	Stop Screw	All	1034-836-2000	<b>021-025</b>
19.	Throttle Valve	28-33mm 35-41mm	N501-18C02 N501-20C00	<b>021-300</b> <b>021-325</b>
20.	Roller	All	1119-803-7002	<b>021-027</b>
21.	Vacuum Release Plate	28-33mm 35-41mm	1609-801-2101 1609-802-2101	<b>021-029</b> <b>021-030</b>
22.	Seal	28-33mm 35-41mm	1099-816-6001 1099-817-6001	<b>021-032</b> <b>021-033</b>
23.	Jet Needle	28-33mm 35-41mm	N427-90-xxx N427-OC-xxx	<b>Pg.118</b> <b>Pg.118</b>
24.	Clip for Jet Needle	All	0403-802-1000	<b>018-616</b>
25.	Needle Set Screw	All	1421-801-2000	<b>021-034</b>
26.	Main Nozzle	Downdraft Horizontal	1154-835-2100 1154-838-8000	<b>021-037</b> <b>021-036</b>
27.	Main Jet	All	99101-357-xxx	<b>Pg.150</b>
28.	Slow Jet	All	N424-25B-xxx	<b>Pg.148</b>
30.	Slow Air Jet	All	99101-124-xxx 99101-ZF5-xxx (old part no.)	<b>Pg.149</b>

**Part no. #30, Slow Air Jet can be replaced with Slow Air Screw, see Part no. #129 and #130 in drawing.**

# KEIHIN FCR Single Parts

No.	Description	Application	Keihin No.	Order No.	No.	Description	Application	Keihin No.	Order No.
32.	Pilot Screw (*Option)	6 ° taper, All 9 ° taper,	N446-05A00 N446-05C00	021-039 021-038	85.	O-Ring, Fuel L-Joint	All	W9351-13057	018-755
33.	Spring, Pilot Screw	All	1290-812-2001	021-041	90.	Idle Speed Screw	All	1034-837-2100	021-099
34.	O-Ring, Pilot Screw	All	16075-KG8-9010	021-043	91.	Washer	All	0301-078-1200	021-101
			M1		92.	Spring	All	1300-112-2000	021-103
35.	Washer, Pilot Screw	All	0301-803-2000	021-045	100.	Screw, Bracket	All	0136-804-1100	021-105
36.	Valve Seat	Size			103.	Main Air Jet	35-41mm	99101-393-xxx	Pg.150
	All Downdraft FCR - Use with Float Valve			018-676	110.	Collar		N704-05017	021-563
	All Downdraft	1.00	N361-03-xxx	021-218	122.	O-Ring, Drain Bolt	All	16075-935-0060	021-109
	All Downdraft	1.20	N361-03-xxx	021-219	123.	Drain Bolt	All	1018-804-2000	021-111
	All Downdraft	1.40	N361-03-xxx	021-220	125.	Mounting Adapters (Spigots)			Pg.111-112
	All Downdraft	1.60	N361-03-xxx	021-221	126.	Velocity Stacks -	Sold each		
	All Downdraft	1.80	N361-03-xxx	021-222		Blue, 50mm long	28-33mm	1130-806-7002	021-113
	All Downdraft	2.00 (Std)	N361-03-xxx	021-223		Blue, 50mm long	35-41mm	1130-807-7000	021-114
	All Downdraft	2.20	N361-03-xxx	021-224		Red, 30mm long	35-41mm	1130-808-7000	021-115
	All Downdraft	2.40	N361-03-xxx	021-225	129.	Slow Air Screw	All	1014-817-2000	021-230
	All Downdraft	2.60	N361-03-xxx	021-226	130.	Spring	All	16052-KM4-0040	021-235
	Valve Seat	Size			140.	Bolt		N114-06161	021-705
	All Horizontal FCR - Use with Float Valve			018-504	141.	Collar		1118-984-2000	021-706
	All Horizontal	3.20 (Std)	N361-04-xxx	021-240	156.	Bolt		0136-812-1100	021-150
	All Horizontal	3.40	N361-04-xxx	021-241	169.	Bracket		1190-A11-2000	021-850
	All Horizontal	3.60	N361-04-xxx	021-242					
	All Horizontal Singles	3.80 (Std)	N361-04-xxx	021-243					
	All Horizontal	4.00	N361-04-xxx	021-244					
37.	O-Ring, Valve Seat	All	16958-397-7710	021-047					
			M1						
38.	Screw, Valve Seat	Downdraft	0118-804-1100	021-049					
		Horizontal	0118-806-1100	021-250					
39.	Float	All	1052-837-2200	021-051					
40.	Arm Pin	All	W9525-25250	018-670					
41.	Screw, Arm Pin	All	93500-04008-1H	021-053					
42.	Float Valve (Needle Valve)								
	Downdraft (1.0 - 2.6)	All	16155-ZG8-L100	018-676					
	Horizontal (3.2 - 4.0)	All	1062-814-2100	018-504					
43.	Clip, Float Valve	All	0405-019-1000	018-674					
45.	O-Ring, Float Bowl	All	1202-846-6000	021-055					
47.	Cover, Accel. Pump	All	1230-826-2002	021-057					
49.	Float Bowl	Downdraft	1050-868-2100	021-258					
	Float Bowl	Horizontal	1050-886-2100	021-264					
51.	Diaphragm	All	1201-858-2400	021-065					
52.	U-Ring, Accel. Pump	All	W9353-3600	021-067					
53.	Spring, Accel. Pump	All	1300-142-2000	021-069					
54.	O-Ring, Accel. Pump	All	16178-548-0040	021-071					
64.	Link Lever	28-33mm	1100-868-2100	021-073					
		35-41mm	1100-870-2100	021-074					
65.	Link Lever	Downdraft	1100-867-7001	021-076					
		Horizontal	1100-872-7000	021-252					
66.	Coil Spring #1	All	1305-933-2000	021-078					
67.	Coil Spring #2								
	Downdraft	28-33mm	1305-934-2000	021-080					
	Downdraft	35-41mm	1305-939-2000	021-081					
	Horizontal	All	1305-952-2000	021-254					
68.	Rod, Link Lever	All	1458-825-2000	021-083					
	Rod, Link Lever	GSX-R	1458-827-2000	021-256					
		liquid cooled							
	Flat, Link Arm		1061-818-2100	021-022					
69.	Washer, Rod Link	All	0301-136-7000	021-085					
70.	Pin, Link Lever	All	W9251-12081	021-087					
71.	Rubber Cap	All	1028-825-2001	021-089					
72.	Rod	Downdraft	1458-826-2000	021-091					
		Horizontal	1458-829-2000	021-255					
73.	Washer, Link Lever	All	W1795-097-9900	021-856					
74.	Collar, Link Lever	All	W1704-241-9900	021-095					
75.	Bolt	All	0136-818-1100	021-702					
78.	Nut	All	0208-810-1100	021-703					
79.	Collar	All	1118-959-2000	021-704					
83.	Fuel L-Joint	Downdraft	1074-848-2100	021-251					
	Fuel L-Joint	Horizontal	1074-848-2300	021-854					



018-866

## Sudco FCR Carburetor Rebuild Kits

Each kit contains genuine KEIHIN parts to rebuild one Keihin Flat-CR Smoothbore carburetor body. Order per kit needed, one or more depending on number of carbs on bike. **Made in Japan.**

H - Horizontal Carburetor

D - Downdraft Carburetor

### Keihin Flat CR Downdraft

Application	Order No.
28-33 FCR-D	018-865
35-39 FCR-D	018-866
41 FCR-D	018-867

### Keihin Flat CR Horizontal

28-33 FCR-H	018-865
35-39 FCR-H	018-870
41 FCR-H	018-871

## Sudco FCR Cable Choke Assembly

For FCR single carburetor. Sold as an assembly.

Order No. **018-977** Contains the following parts:

Qt	Description
1	Starter Valve
1	Coil Spring
1	Cap
1	Rubber

